

24 Way SC Duplex / LC Quad Fibre Optic Panel - Empty, LIIN-25



Standards of reference and applications

EIA19"

Data centers

LAN/SAN

CATV networks

Fiber-to-the-home (FTTH) applications

Installation Features

Store at -0 to +70 °C

Install at -0 to +50 °C

Operate at : -20 to +60 °C

Fitting : designed for 24 adapters (SC Simplex or LC Duplex)

Design

Material : powder painted steel

Colour : black

Features : built-in splice management

Number of adaptors: 24

Type of adaptors: SC Duplex or LC Quad

Number of cores: up to 48 with SC DX or up to 96 with LC QD

Size : 19", 1 Unit / Width: 483mm x Height 44mm x Depth 205mm

Ordering and delivery information

P/N	Weight (kg/km)	Packaging
ODF124SCD	2.1	1 pc / ctn

Recommended connectivity

Adaptors : all LIIN-25 adaptors SC and LC, SM and MM

Pigtails : all LIIN-25 pigtails SC and LC, SM and MM

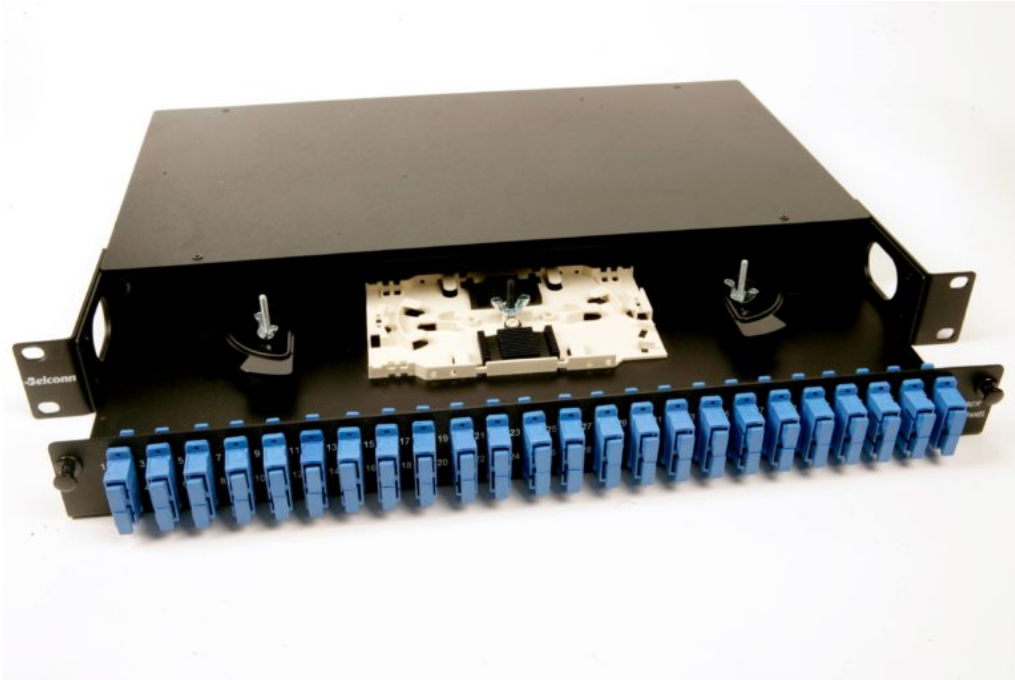
Patchcords : all LIIN-25 patchcords SC and LC, SM and MM

Extended System Warranty

The APS System Warranty assures the compliance of the system performance to the applicable class of cabling for a period of 25 years. The warranty may be applied for by an accredited APS Partner who has designed and/or installed the entire system.

Every effort has been put so that this document is most reliable and free from errors. However, AP Solutions Oy

cannot be considered responsible for any mistake in this document and users should consult AP Solutions Oy for any information needed. AP Solutions Oy reserves the right to make changes to the documents at any time, without prior notice.



LIIN-25 24 Way SC Simplex / LC Duplex Fibre Optic Panel - Empty



Standards of reference and applications

EIA19"

Data centers

LAN/SAN

CATV networks

Fiber-to-the-home (FTTH) applications

Installation Features

Store at -0 to +70 °C

Install at -0 to +50 °C

Operate at : -20 to +60 °C

Fitting : designed for 24 adapters (SC Simplex or LC Duplex)

Design

Material : powder painted steel

Colour : black

Features : built-in splice management

Number of adapters: 24

Type of adapters: SC Simplex or LC Duplex

Number of cores: up to 24 with SC SX or up to 48 with LC DX

Size : 19", 1 Unit / Width: 483mm x Height 44mm x Depth 205mm

Ordering and delivery information

P/N	Weight (kg/km)	Packaging
ODF124SCS	2.1	1 pc / ctn

Recommended connectivity

Adapters : all LIIN-25 adapters SC and LC, SM and MM

Pigtails : all LIIN-25 pigtails SC and LC, SM and MM

Patchcords : all LIIN-25 patchcords SC and LC, SM and MM

Extended System Warranty

The APS System Warranty assures the compliance of the system performance to the applicable class of cabling for a period of 25 years. The warranty may be applied for by an accredited APS Partner who has designed and/or installed the entire system.



Every effort has been put so that this document is most reliable and free from errors. However, AP Solutions Oy cannot be considered responsible for any mistake in this document and users should consult AP Solutions Oy for any information needed. AP Solutions Oy reserves the right to make changes to the documents at any time, without prior notice.